

3091 / 3093 PORTABLE HOLE CUTTER SYSTEM



Wheeler Rex ■ Ashtabula, Ohio USA

www.wheelerrex.com ■ wheeler@wheelerrex.com



ATTACHING THE DRILL

The 3091 Portable Hole Cutter Assembly does not come with a drill. The following instructions show how to attach the drill to the gear rack assembly. This assembly is designed to be used with a DeWalt Model# DW130V drill.



Threaded hole where lower block will be attached.



Place lower block on drill with counter-bored hole facing up.



Use Part Number 277046 (1/2-13 Hex Screw) and Part Number 701172 Mounting Plug.

ATTACHING THE DRILL CONTINUED



Assemble Hex Screw and Mounting Plug in drill body. Do not tighten.



Place drill on it's side.

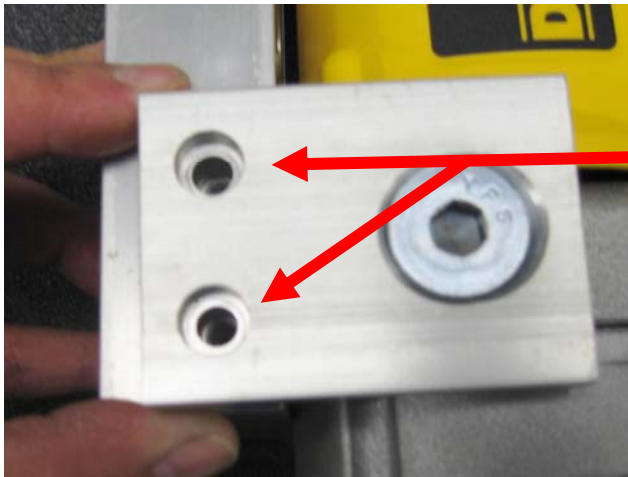


701171 Mounting Tab

277060 Screw

Install Part Number 277060 (1/2-13 Flat Head Cap Screw) into slotted hole of Part Number 701171 Mounting Tab. Do not tighten.

ATTACHING THE DRILL CONTINUED

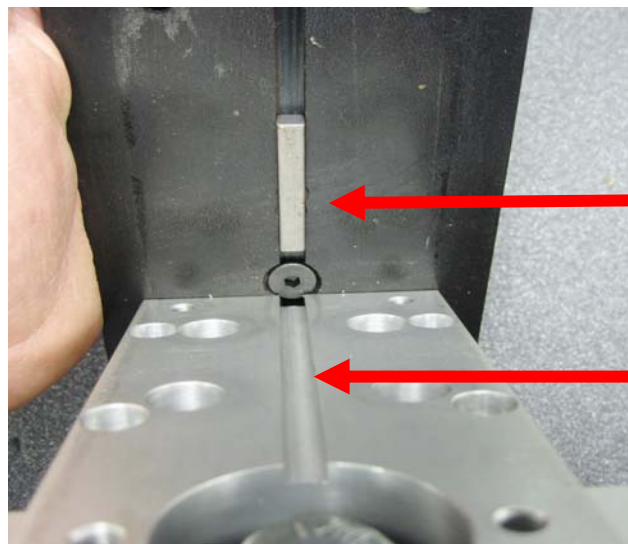


275137 Screw (2)

Install (2) Part Number 275133 (1/4-20 Socket Head Cap Screws) into the Mounting Tab. Tighten all three screws. Repeat this for the second Mounting Tab on the opposite side of the lower block.



Tighten Hex Head Cap Screw.

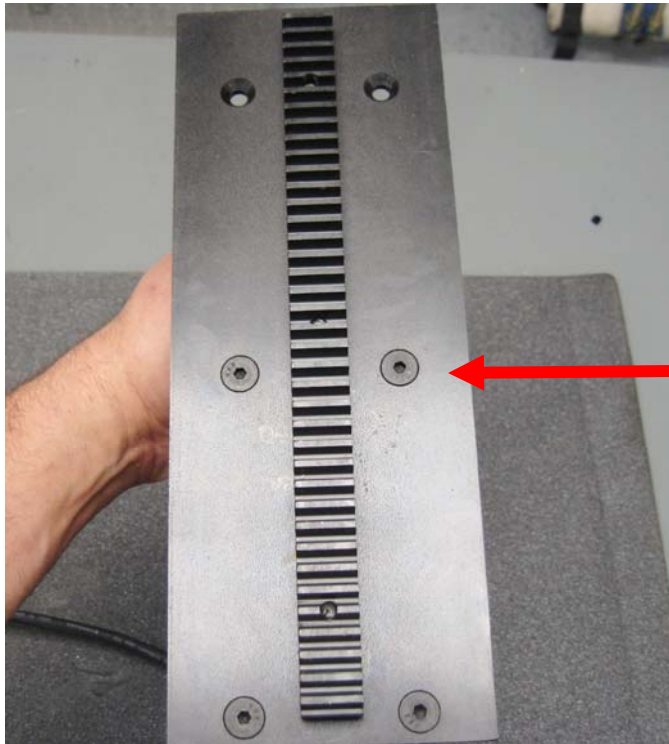


Key

Key Slot

Align key installed on Part Number 701063 plate to Key Slot Lower Block.

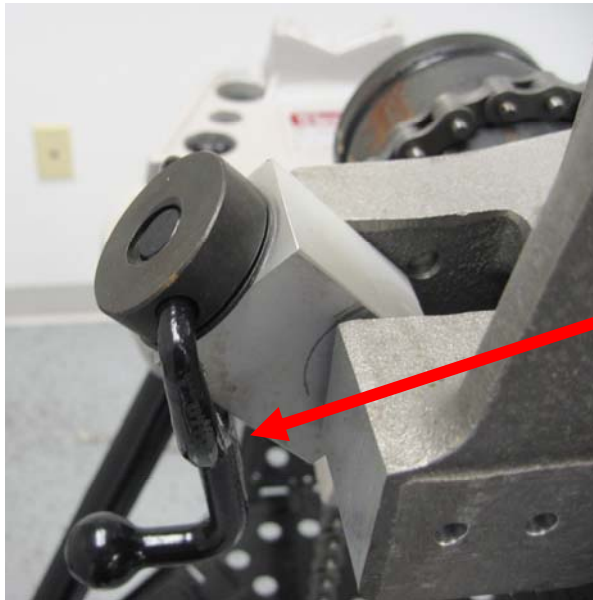
ATTACHING THE DRILL CONTINUED



276888 (4) Screws

Install (4) Part Number 276888 (1/4-20 Flat Head Cap Screw) into plate. Tighten all (4) screws using an Allen Key.

USING THE 3091 / 3093 PORTABLE HOLE CUTTER



Handle

Turn Handle counterclockwise to lower chain screw threads.



Place frame on pipe.



Make sure the machined "V" in the bottom of the frame is centered on the pipe.

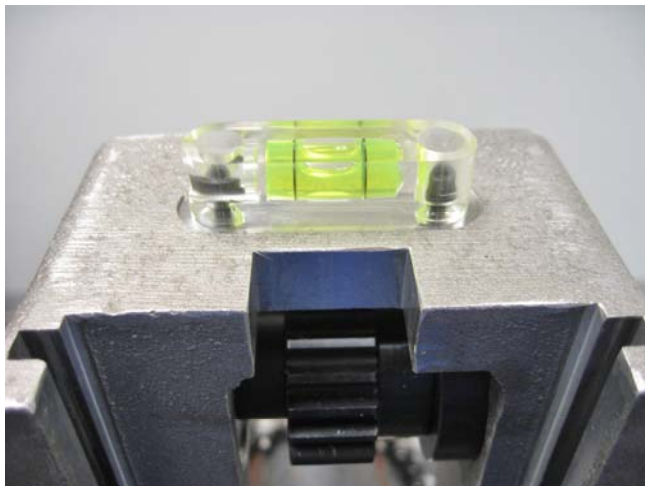
USING THE 3091 / 3093 PORTABLE HOLE CUTTER



Pull the chain upward and place into the Part Number 700993 chain hook block. (see below)

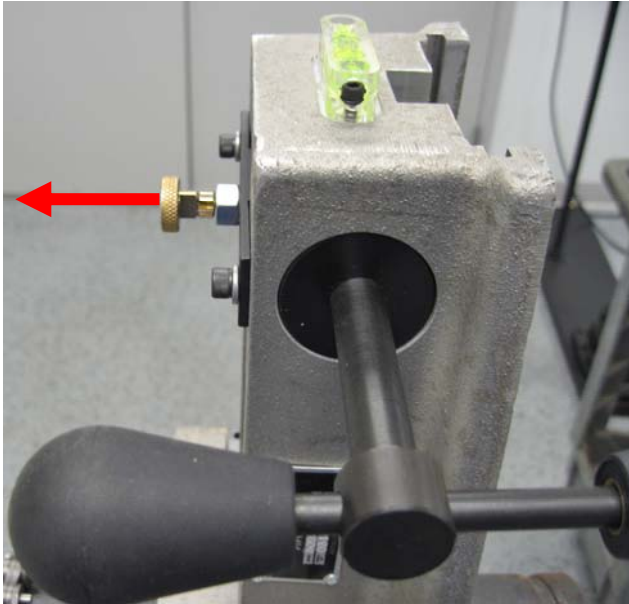


Once chain is hooked into the block, turn Part Number 606742 Handle in the clockwise direction to tighten frame to pipe.

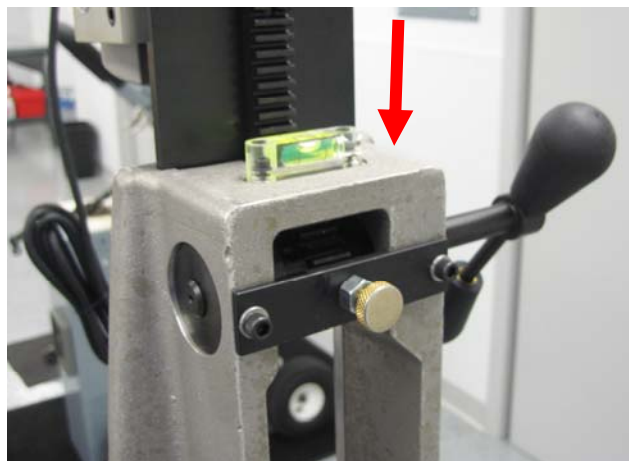


A bubble level is mounted on top of the frame for your convenience.

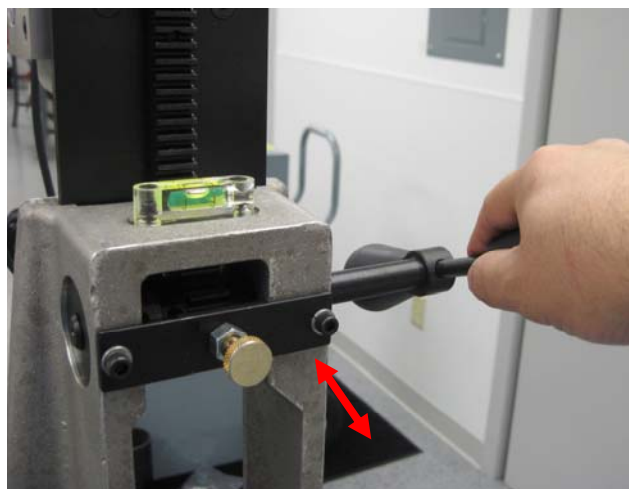
ASSEMBLING THE DRILL TO THE FRAME



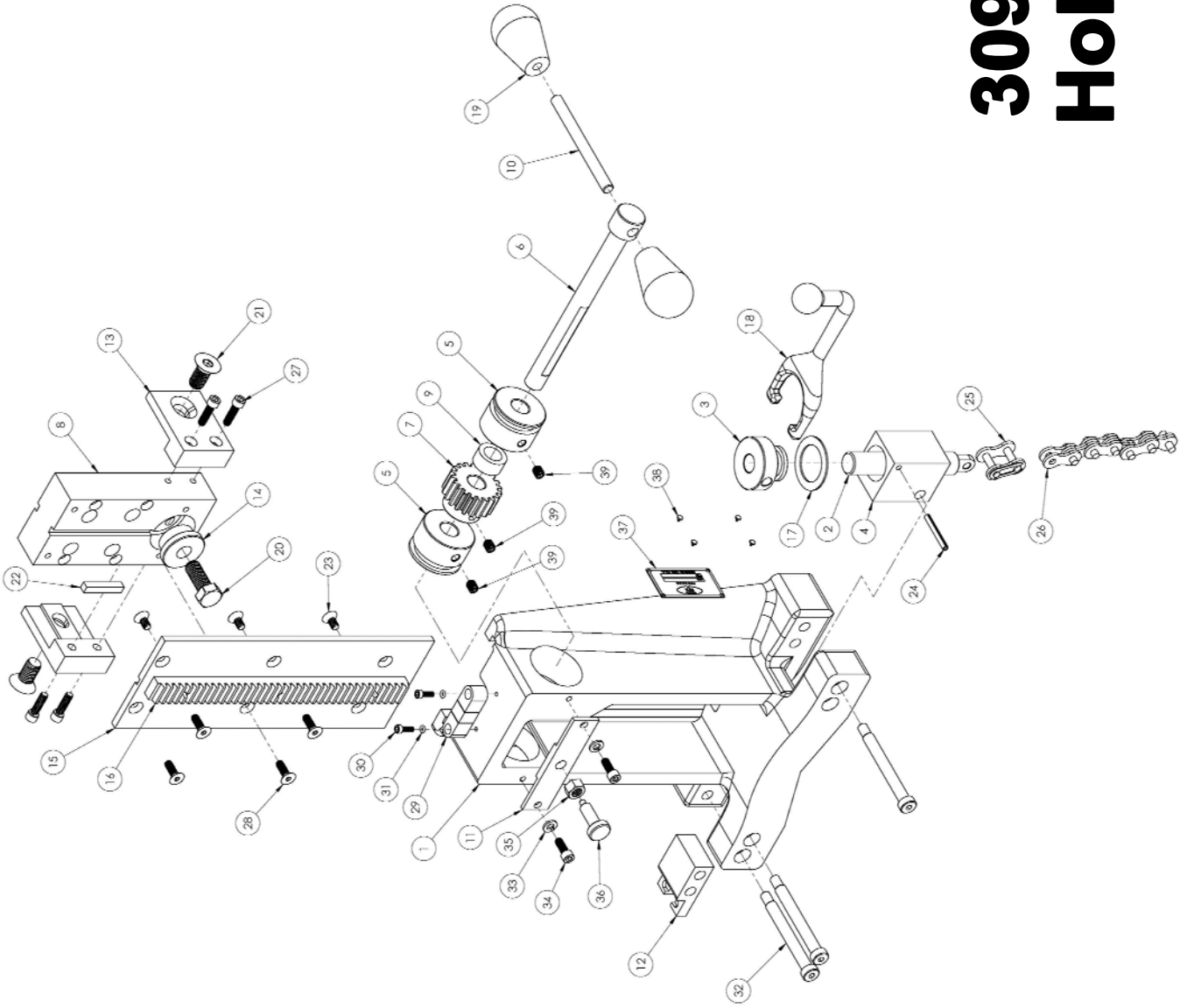
Pull Part Number 276899 retractable spring plunger out and turn 90 degrees. This allows the feed handle to turn freely.



Place Part Number 701063 plate (with drill attached) into the slot of frame. Turn Part Number 276899 retractable spring plunger knob 90 degrees to lock feed handle.



Once the drill has been placed into the frame, hold the feed handle and pull the retractable spring plunger knob 90 degrees to unlock feed handle before and after drilling.



3091 / 3093 Hole Cutter

Item	Part No	Description	Qty
1	700975	FRAME (MACHINED)	1
2	700710	CHAIN SCREW	1
3	700708	CRANK NUT	1
4	700985	CHAIN TENSION BLOCK	1
5	700986	SPACER (FOR 3090)	2
6	701010	SHAFT	1
7	701012	SPUR GEAR	1
8	700996	LOWER BLOCK	1
9	701013	SPACER	1
10	701016	CROSS BAR	1
11	701098	FRONT GUARD	1
12	700993	CHAIN HOOK	1
13	701171	MOUNTING TAB	2
14	701172	MOUNTING PLUG	1
15	701063	PLATE	1
16	701113	RACK, MACHINED	1
17	606751	BEARING	1
18	606742	HANDLE	1
19	276834	HANDLE END	2
20	277046	1/2-13 x 1 1/4" HEX HEAD CAP SCREW	1
21	277060	1/2-13 x 1" FHCS	2
22	701190	KEYWAY	1
23	276888	1/4-20 x 1/2" FLAT HEAD CAP SCREW	3
24	275862	3/16" DIA x 1 1/2" ROLL PIN	1
25	2065	CHAIN CONNECTING LINK	1
26	276900	CHAIN	1
27	275133	1/4-20 x 7/8" SOCKET HEAD CAP SCREW	4
28	275040	1/4-20 x 3/4" FLAT HEAD CAP SCREW	4
29	277063	BUBBLE LEVEL	1
30	275402	#8-32 x 1/2" SHCS	2
31	277064	O-RING	2
32	276833	5/16-18 x 3/8" DIA. x 3" SHOULDER SCREW	3
33	275105	1/4" SPLIT LOCK WASHER	2
34	275021	1/4-20 x 5/8" SOCKET HEAD CAP SCREW	2
35	2024	3/8-16 HEX NUT	1
36	276899	RETRACTABLE SPRING PLUNGER	1
37	700595	NAME PLATE	1
38	276203	METAL TAK	4
39	275649	5/16-18 x 3/8" CUP POINT SET SCREW	3
40	701114	CARRYING CASE ***NOT SHOWN***	1